

Stompboxes

JUNE-60

Authentic Recreation of the Juno-60 Synthesizer Chorus with 2-Button Interface and BBD Circuitry

- Faithful recreation of the chorus circuitry from the legendary Juno-60* Synthesizer
- Authentic 2-button interface for intuitive and fast change of modulation tone
- All-analog BBD (Bucket Brigade Delay) circuitry
- Mono/stereo switch for ultimate chorus experience
- True bypass for ultimate signal integrity
- “Built-like-a-tank” metal chassis
- Runs on 9 V battery or PSU-SB DC power supply (not included)
- 3-Year Warranty Program*
- Designed and engineered in Denmark



JUNE-60 CHORUS is a faithful recreation of the lush chorus circuit found in the legendary Juno-60* synthesizer – the iconic synth sound that fueled countless '80 hits and defined the cult movie themes of an entire era. Now you can have the adored chorus sound from one of the most revered, classic synthesizers back to the future. But don't worry – we're keeping it old school.



Who Needs Knobs?

JUNE-60 brings the recognizable sound of all your favorite classic eighties synth themes to the world of guitar. Just like the original Juno-60, you only get two buttons to work with – less is more, right? Simply plug in, press a button or two, and write the intro for the next sci-fi cult classic. Button I gives you a slow moving, rich chorus, perfect for thematic synth tones, while Button II presents a faster, woblier chorus for a thick, groovy tone, that also works quite well for painting a swirl on a hard-rocking shred tone. Combine both modes for a swirly “dual” chorus with double sine curves battling each other for total tonal supremacy!

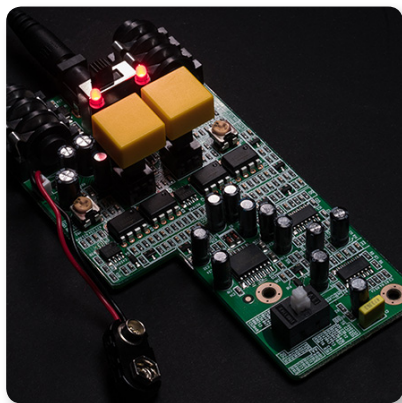
*All third-party trademarks are the property of their respective owners. Their use neither constitutes a claim of the trademark nor affiliation of the trademark owners with Music Tribe. Product names are mentioned solely as a reference for compatibility, effects and/or components. Warranty details can be found at musictribe.com.

JUNE-60

Authentic Recreation of the Juno-60 Synthesizer
Chorus with 2-Button Interface and BBD Circuitry

Modulation in Stereo

A great chorus fills the room with a warm wobble while blending in nicely with other instruments. And while we think chorus is great no matter the setup, a stereo rig is where the chorus effect becomes magical. With the flick of a switch, JUNE-60 converts the output from mono to stereo, giving you those deep and sultry, pulsating tones that engulf the aural space. That being said, mono is still pretty darn sweet.

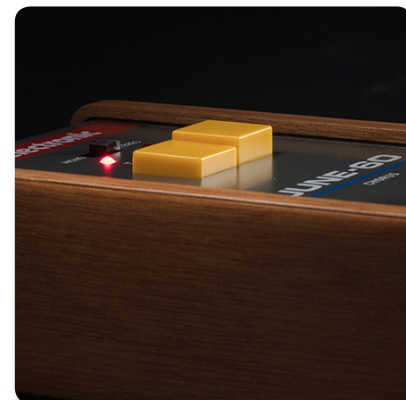


Buckets & Buckets

To keep the sound of JUNE-60 authentic, we called in the brigade – a bucket brigade delay circuit that is! This tried and true piece of analog circuitry is the same design used in the legendary Juno-60 synth, as well as a bevy of other sought-after analog choruses. Going all analog is the only way to achieve that unmistakable timbre and touch of the original. In this case, the old way truly is the best way.

Tone Machine in a Pedal – with Style

JUNE-60 will stand up to any sort of gigging abuse on the road, while delivering crispy true-bypass tones that won't eat your clean sound. With dark wooden panels on the sides, JUNE-60 is tastefully vintage and adds a sophisticated look to any board. The earthy wood details are subtly balanced by the warm, yellow buttons and the top-mounted jacks handle close quarter pedalboards with ease.



JUNE-60

Authentic Recreation of the Juno-60 Synthesizer
Chorus with 2-Button Interface and BBD Circuitry



You Are Covered

We always strive to provide the best possible Customer Experience. Our products are made in our own [Music Tribe](#) factory using state-of-the-art automation, enhanced production workflows and quality assurance labs with the most sophisticated test equipment available in the world. As a result, we have one of the lowest product failure rates in the industry, and we confidently back it up with a generous [Warranty program](#).

JUNE-60

Authentic Recreation of the Juno-60 Synthesizer
Chorus with 2-Button Interface and BBD Circuitry



JUNE-60

Authentic Recreation of the Juno-60 Synthesizer
Chorus with 2-Button Interface and BBD Circuitry



Stompboxes

JUNE-60

Authentic Recreation of the Juno-60 Synthesizer
Chorus with 2-Button Interface and BBD Circuitry



For service, support or more information contact the TC Electronic location nearest you:

Europe
Music Tribe Brands UK Ltd.
Tel: +44156 273 2290
Email: CARECrea@musictribe.com
CAREnte@musictribe.com
CARELife@musictribe.com

USA/Canada
Music Tribe Commercial NV Inc.
Tel: +1 702 800 8290
Email: CARECrea@musictribe.com
CAREnte@musictribe.com
CARELife@musictribe.com

Japan
Music Tribe Services JP K.K.
Tel: +81 3 6231 0453
Email: CARECrea@musictribe.com
CAREnte@musictribe.com
CARELife@musictribe.com

Music Tribe accepts no liability for any loss which may be suffered by any person who relies either wholly or in part upon any description, photograph, or statement contained herein. Technical specifications, appearances and other information are subject to change without notice. All trademarks are the property of their respective owners. Midas, Klark Teknik, Lab Gruppen, Lake, Tannoy, Turbosound, TC Electronic, TC Helicon, Behringer, Bugera and Coolaudio are trademarks or registered trademarks of Music Tribe Global Brands Ltd.
© Music Tribe Global Brands Ltd. 2018 All rights reserved.

tc electronic